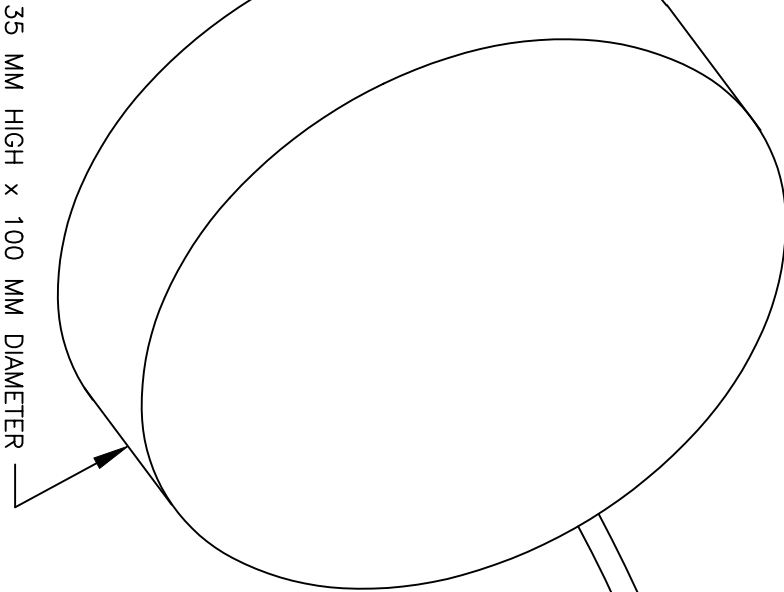


← MOUNTING LOCATION - TANK WALL SHOWN

CONDITION 1:
LIQUID LEVEL BELOW MOUNTING LOCATION (i.e. "Dry");
SWITCH STATUS OPEN OR CLOSED (SPDT)
DEPENDENT UPON WIRING CONFIGURATION

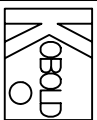
CONDITION 2:
LIQUID LEVEL AT OR ABOVE MOUNTING
LOCATION; SWITCH STATUS REVERSED



SWITCH LOGIC:

BLACK: NORMALLY CLOSED (N/C) DRY
BLUE: NORMALLY OPEN (N/O) DRY
BROWN: COMMON
YELLOW/GREEN: EQUIPMENT GROUND

NORMALLY OPEN OR NORMALLY CLOSED LOGIC
REFERS TO THE SWITCH POSITION WHEN THE
FLOAT IS NOT IN CONTACT WITH THE PROCESS FLUID (i.e. "Dry")



KOBOLD INSTRUMENTS, INC.
1801 Parkway View Drive
Pittsburgh, PA 15205

MODEL: NSM-5101

DATE: 3/28/11

DESC: SWITCH, FLOAT

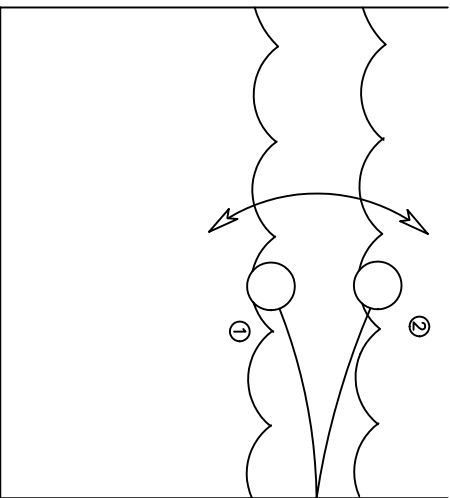
REV: 1

SCALE: NTS

DRAWN: EAS

DWG: nsmfloat

MODEL: NSM-5101
MATERIAL: POLYPROPYLENE FLOAT, POLYAMIDE CABLE GLAND, 6' NEOPRENE CABLE
SPECIFIC GRAVITY: 0.6 MINIMUM
SWITCH TYPE: SPDT MECHANICAL SWITCH, MAX. 250 VAC/6A, 400 VAC/4A, 100mA MIN.
MAX. PRESSURE/TEMP: 45 PSIG/140°F



← MOUNTING LOCATION - TANK WALL SHOWN

CONDITION 1:
LIQUID LEVEL BELOW MOUNTING LOCATION (i.e. "Dry");
SWITCH STATUS OPEN OR CLOSED (SPDT)
DEPENDENT UPON WIRING CONFIGURATION

CONDITION 2:
LIQUID LEVEL AT OR ABOVE MOUNTING
LOCATION; SWITCH STATUS REVERSED

TANK

NSP-5101: 29.5 MM DIAMETER x 155 MM LENGTH

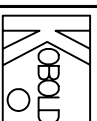
NSP-5201: 90 MM DIAMETER SPHERE

MODEL: NSP-5101, NSP-5201
MATERIAL: POLYPROPYLENE FLOAT, 13' (4M) TPK CABLE
SPECIFIC GRAVITY: NSP-5101, 0.9 MIN, NSP-5201, 0.6 MIN.
SWITCH: SPDT MECHANICAL MAX. 250 VAC/150 VDC, 300 VA, 60 W, 1 mA to 1.5 A
MAX. PRESSURE/TEMP: NSP-5101, 15 PSIG/140°F, NSP-5201, 30 PSIG/140°F

SWITCH LOGIC:

BROWN: NORMALLY CLOSED (N/C) DRY
BLUE: NORMALLY OPEN (N/O) DRY
BLACK: COMMON

NORMALLY OPEN OR NORMALLY CLOSED LOGIC
REFERS TO THE SWITCH POSITION WHEN THE
FLOAT IS NOT IN CONTACT WITH THE PROCESS FLUID (i.e. "Dry")

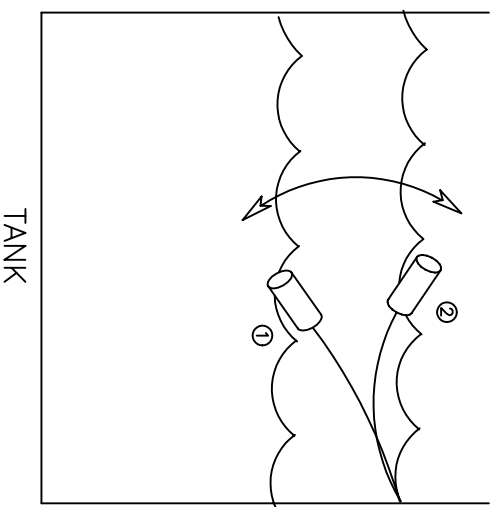


KOBOLD INSTRUMENTS, INC.
1801 Parkway View Drive
Pittsburgh, PA 15205

MODEL: NSP-5101, NSP-5201 DATE: 3/28/11

DESC: SWITCH, FLOAT REV: 2

SCALE: NTS DRAWN: EAS DWG: nspfloat



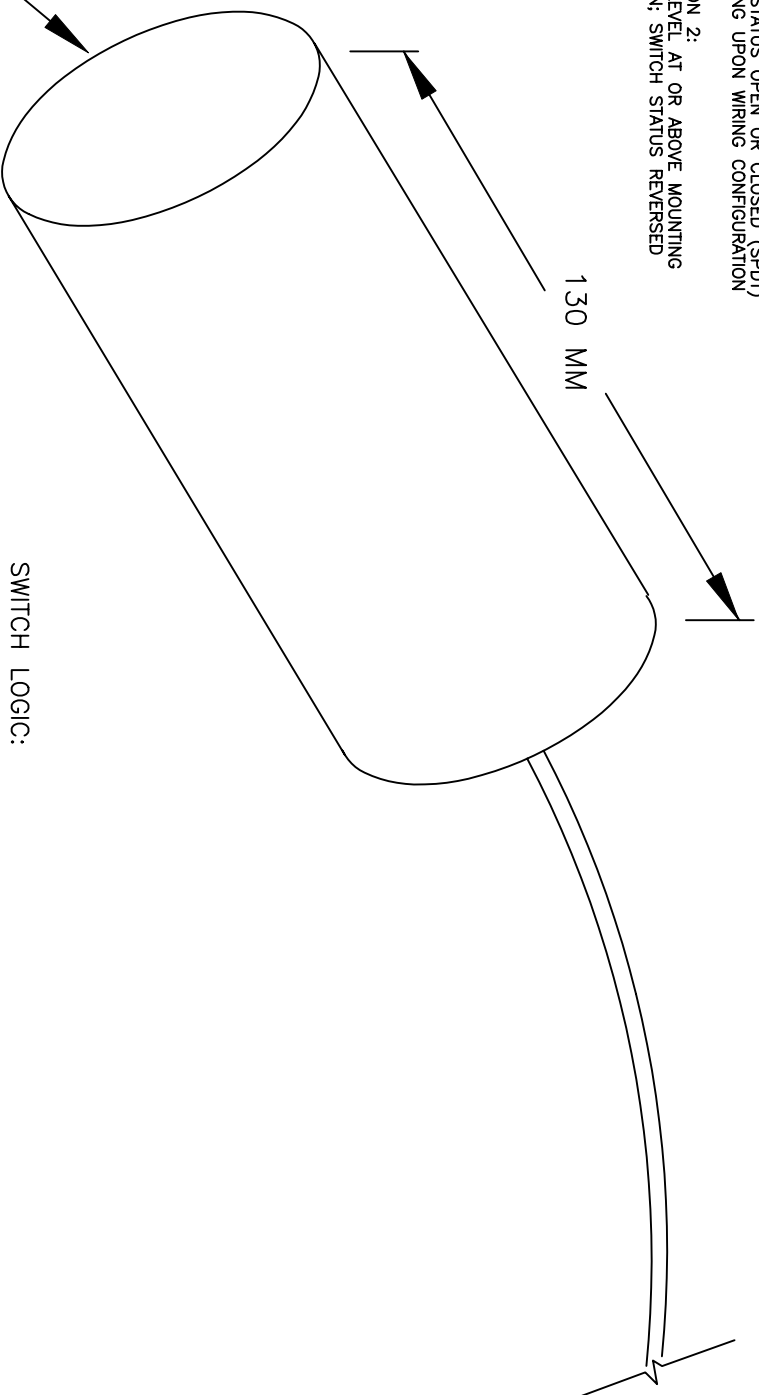
— MOUNTING LOCATION — TANK WALL SHOWN

CONDITION 1:
LIQUID LEVEL BELOW MOUNTING LOCATION (i.e. "DRY");
SWITCH STATUS OPEN OR CLOSED (SPDT)
DEPENDENT UPON WIRING CONFIGURATION

CONDITION 2:
LIQUID LEVEL AT OR ABOVE MOUNTING
LOCATION; SWITCH STATUS REVERSED

130 MM

55 MM Ø

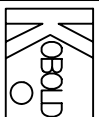


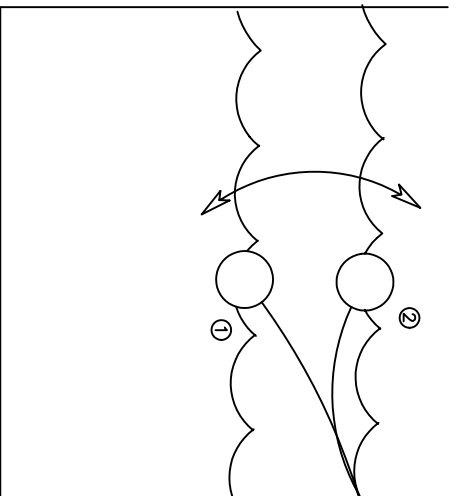
SWITCH LOGIC:

BROWN: NORMALLY CLOSED (N/C) DRY
BLUE: NORMALLY OPEN (N/O) DRY
BLACK: COMMON

NORMALLY OPEN OR NORMALLY CLOSED LOGIC
REFERS TO THE SWITCH POSITION WHEN THE
FLOAT IS NOT IN CONTACT WITH THE PROCESS FLUID (i.e. "DRY")

MATERIAL: PTFE FLOAT, 6' FEP CLAD CABLE
SPECIFIC GRAVITY: 0.79 MIN.
SWITCH TYPE: MECHANICAL (REED) SPDT SWITCH
SWITCH RATINGS: 4 to 250 VAC/VDC, 60 VA, 1 mA TO 1 A MAX.
MAX. PRESSURE/TEMP: 15 PSIG/302°F

 KOBOLD INSTRUMENTS, INC. 1801 Parkway View Drive Pittsburgh, PA 15205	
MODEL: NST-5101	DATE: 3/28/11
DESC: FLOAT SWITCH	REV: 2
SCALE: NTS	DRAWN: EAS
	DWG: nstfloat

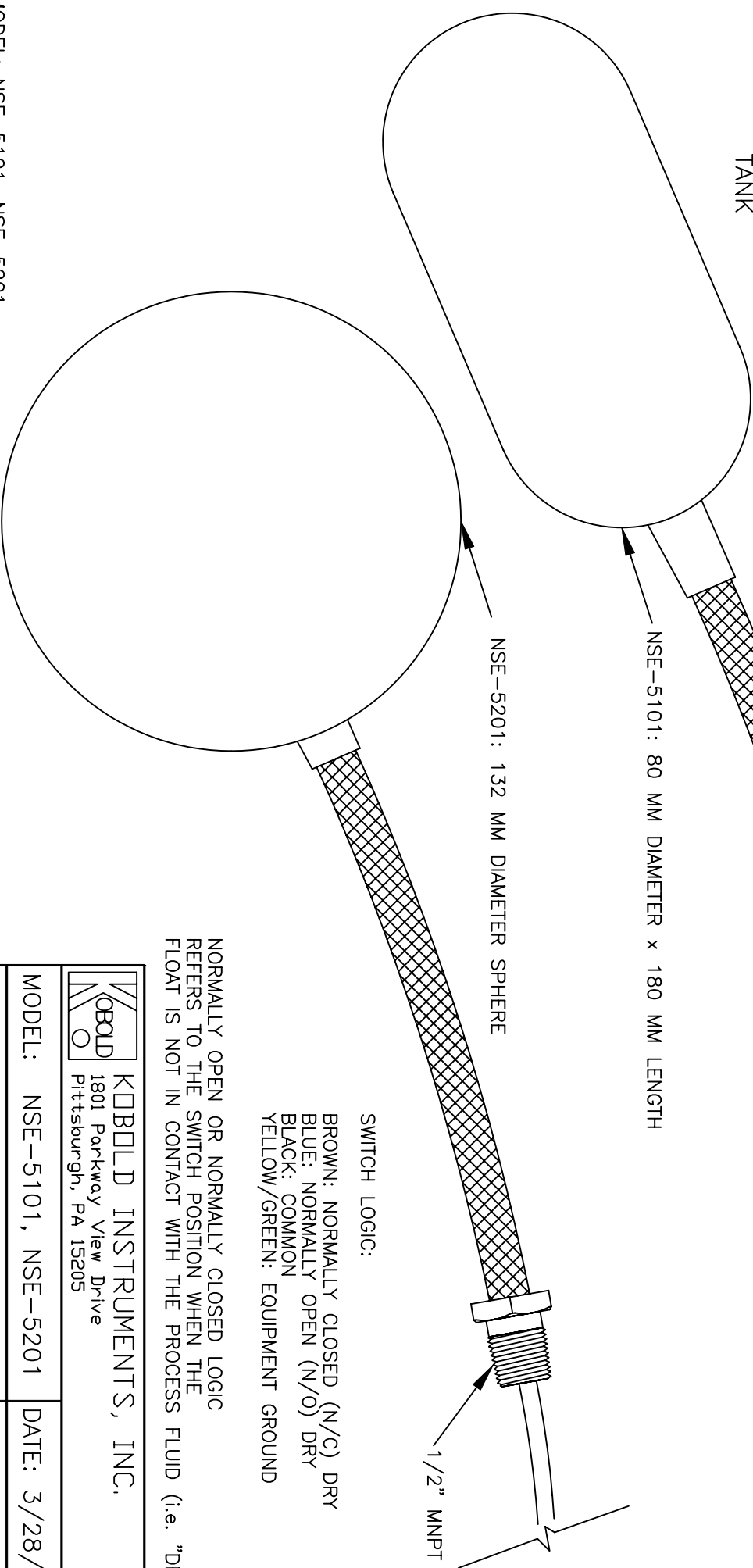


← MOUNTING LOCATION - TANK WALL SHOWN

CONDITION 1:
LIQUID LEVEL BELOW MOUNTING LOCATION (i.e. "Dry");
SWITCH STATUS OPEN OR CLOSED (SPDT)
DEPENDENT UPON WIRING CONFIGURATION

CONDITION 2:
LIQUID LEVEL AT OR ABOVE MOUNTING
LOCATION; SWITCH STATUS REVERSED

TANK



NSE-5101: 80 MM DIAMETER x 180 MM LENGTH

NSE-5201: 132 MM DIAMETER SPHERE

1/2" MNPT

1/2" MNPT

SWITCH LOGIC:

BROWN: NORMALLY CLOSED (N/C) DRY
BLUE: NORMALLY OPEN (N/O) DRY
BLACK: COMMON
YELLOW/GREEN: EQUIPMENT GROUND

NORMALLY OPEN OR NORMALLY CLOSED LOGIC
REFERS TO THE SWITCH POSITION WHEN THE
FLOAT IS NOT IN CONTACT WITH THE PROCESS FLUID (i.e. "Dry")



KOBOLD INSTRUMENTS, INC.
1801 Parkway View Drive
Pittsburgh, PA 15205

MODEL: NSE-5101, NSE-5201 DATE: 3/28/11

DESC: SWITCH, FLOAT REV: 2

SCALE: NTS DRAWN: EAS DWG: nsefloat

MODEL: NSE-5101, NSE-5201
MATERIAL: 316-Ti SS FLOAT, 6' SILICONE CABLE w/10" SS BRAIDED HOSE
SPECIFIC GRAVITY: 0.8 MIN.
SWITCH: MECHANICAL (REED) SPDT RATINGS: 4 to 250 VAC/VDC, 60 VA, 1 mA TO 1A MAX.
MAX. PRESSURE/TEMP: NSE-5101, 87 PSIG/302°F, NSE-5201, 220 PSIG/302°F