

BAYLAN

WATER METERS

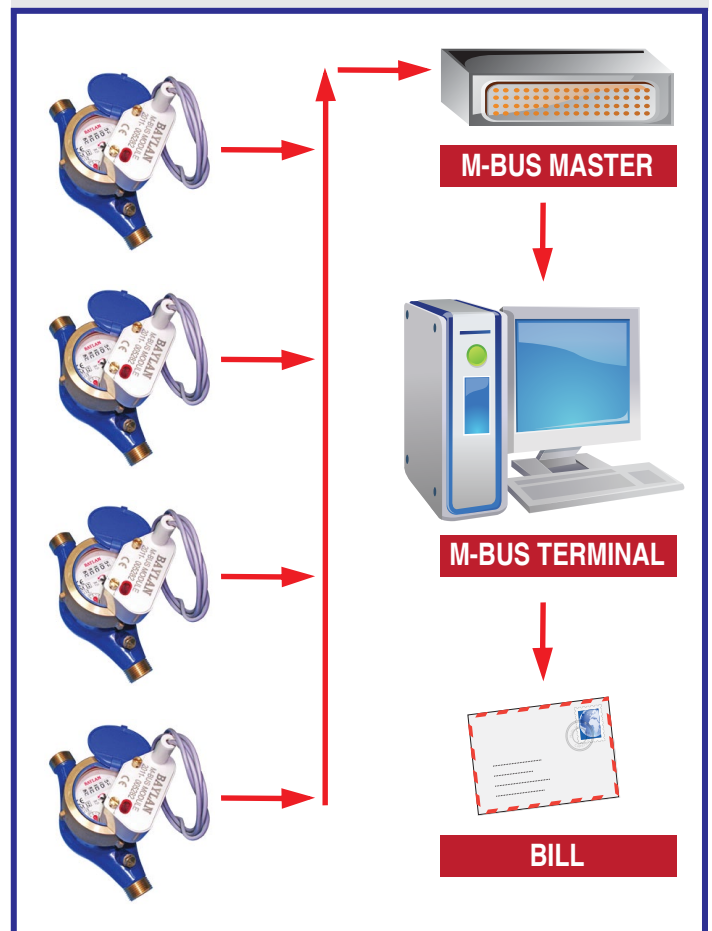
WATER METERS WITH M-BUS MODULE

Installed water meters supervised over a single line are queried by the M-Bus Master.

The query ends up with the collection of the water meter information by the Management Application.

It enables visualizing of the consumption data in buildings much more affectively. Having collected the water meter information each bill is calculated with a single click in the Management Application.

A new rising European standard M-BUS has been specifically developed for centralized Automated Meter Reading systems.

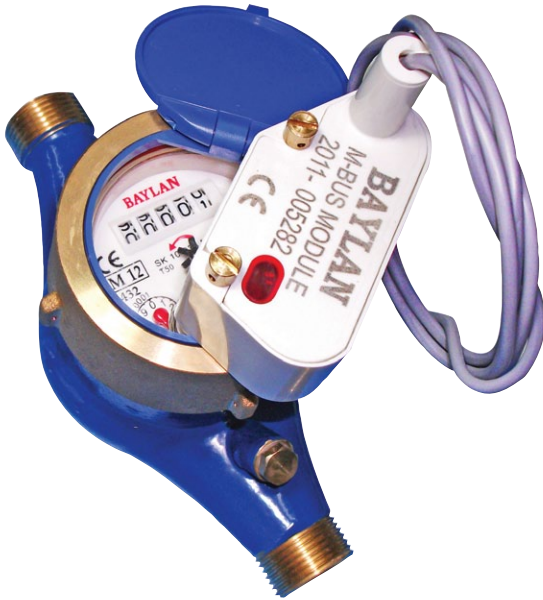
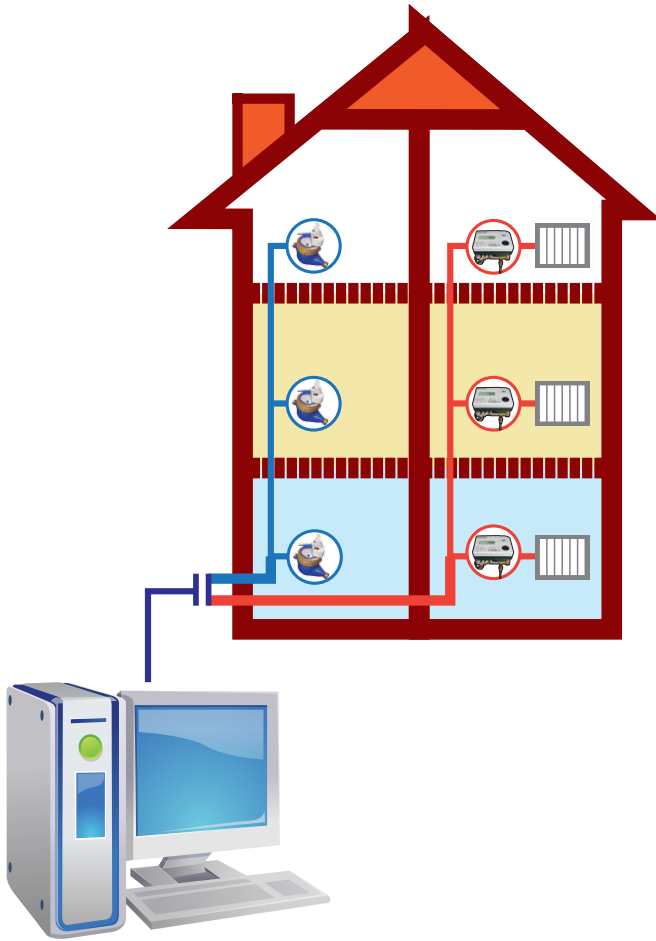


► **M-Bus Module Sensors;**

Magnetic tampering is impossible since the non-magnetic target is not influenced by an external magnet.

► **Reading M-Bus;**

Connectable to all M-Bus capable readout units. Easy cabling.



- **M-Bus protocol;**
Complies with EN13757
- **Data Logs;**
Saves previous 12 months' consumption data
- **Transfer rate;**
300 and 2400 baud (programmable)
- **Searching;**
Primary and Secondary addressing with a Wildcard Search
- **M-Bus cable;**
Cable type 2 x 0,22 mm², Length 1 m
- **Power consumption;**
Bus operation max. 1.5 mA (1 standard load)
- **Power source;**
Lithium battery
- **Batterie life;**
10 years.
- **Alarms;**
Low battery detection
Tampering detection
Leakage detection
Maximum flow rate detection
- **Protection class;**
IP68

Note: The properties defined above may vary according to the mechanical structure/type of the water meter.

"Due to continuous development of our products, we reserve the right to modify our product design or construction without prior notice."

BAYLAN ÖLÇÜ ALETLERİ SAN. ve TİC. LTD. ŞTİ.

Factory: A.O.S.B. 10032 Sok. No:16 Çiğli - İZMİR / TURKEY
Tel: +90 (232) 497 97 00 • Fax: +90 (232) 497 97 51 - 497 97 52 - 497 97 53
e-mail: info@baylanwatermeters.com • web: www.baylanwatermeters.com